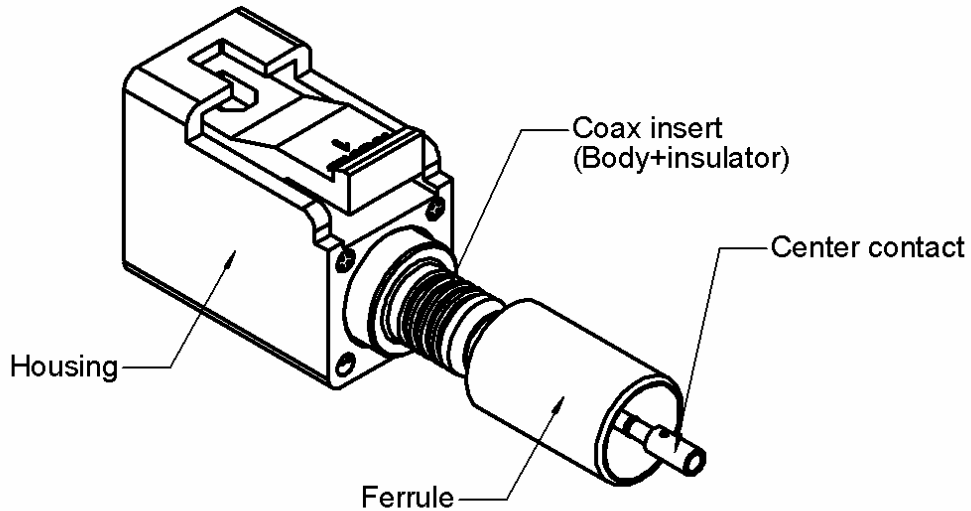
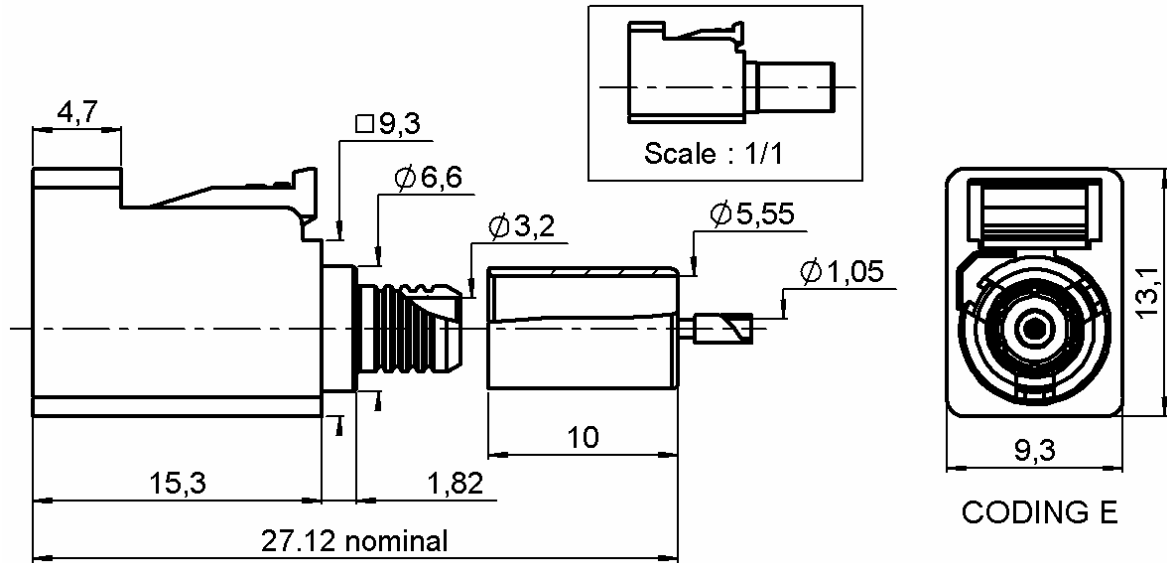


**HOUSING + STRAIGHT FEMALE PLUG**

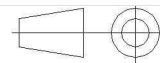
**CRIMP TYPE 5/50S CABLE PACK500**

**R197.114.E01**

Series : **SMB**  
**CARLOCK**



All dimensions are in mm.



COMPONENTS	MATERIALS	PLATINGS (µm)				
BODY	BRONZE	NICKEL 2				
CENTER CONTACT	BRONZE	GOLD 0.8 OVER NICKEL 2				
OUTER CONTACT	-	-				
INSULATOR	PTFE					
GASKET	-					
OTHERS PARTS	BRASS	NICKEL 2				
HOUSING	PA6.6 GF13 (POLYAMIDE)	<table border="1"> <tr> <th>UL CLASSIFICATION</th> <th>COLOR</th> </tr> <tr> <td>UL 94 V-2</td> <td>GREEN RAL 6002</td> </tr> </table>	UL CLASSIFICATION	COLOR	UL 94 V-2	GREEN RAL 6002
UL CLASSIFICATION	COLOR					
UL 94 V-2	GREEN RAL 6002					

Issue : 0636 B

In the effort to improve our products, we reserve the right to make changes judged to be necessary.



**HOUSING + STRAIGHT FEMALE PLUG**

**R197.114.E01**

**CRIMP TYPE 5/50S CABLE PACK500**

Series : **SMB**  
**CARLOCK**

**PACKAGING**

Standard	Unit	Other
<b>500</b>	<b>'W' option</b>	<b>Contact us</b>

**SPECIFICATION**

SAE/USCAR-17 Rev.1 (October 2002)  
SAE/USCAR-2 Rev.3 (February 2001)  
SAE/USCAR-18 Rev.2 (January 2003)

**CABLE ASSEMBLY**

Stripping	a	b	c	d	e	f
mm	2,40	5,50	9,40	0,00	7,00	0,00

**ELECTRICAL CHARACTERISTICS**

Impedance	<b>50</b>	$\Omega$
Frequency	<b>0-4</b>	GHz
VSWR	<b>1.20** + 0,0000</b>	x F(GHz) Maxi
Insertion loss	<b>0.05</b>	$\sqrt{F}$ (GHz) dB Maxi
RF leakage	<b>-45</b>	- F(GHz)) dB Maxi
Voltage rating	<b>335</b>	Veff Maxi
Dielectric withstanding voltage	<b>1000</b>	Veff mini
Insulation resistance	<b>1000</b>	M $\Omega$ mini

Assembly instruction : **Page 3**

Recommended cable(s)  
RG 58

Characteristics indicated on this data sheet are those that can be achieved with the highest performance cable. Intrinsic limitations of the cable may diminish the performance of the assembly

Cable retention

- pull off **180** N mini
- torque **NA** N.cm

**MECHANICAL CHARACTERISTICS**

Center contact retention		
Axial force – Mating end	<b>10</b>	N mini
Axial force – Opposite end	<b>10</b>	N mini
Torque	<b>NA</b>	N.cm mini

**TOOLING**

Part Number	Description	Hexagon
.	.	.
R282.293.000	CRIMPING TOOL	
R282.235.910	CRIMPING DIES	Square 1.1
R282.235.011	CRIMPING DIES	Hex 5.41
R282.281.000	CRIMPING TOOL	2x4pts 7pos
R282.967.034	POSITIONER FOR TOOL R282 281	

Recommended torque		
Mating	<b>NA</b>	N.cm
Panel nut	<b>NA</b>	N.cm
Clamp nut	<b>NA</b>	N.cm
A/F clamp nut	<b>0,0000</b>	mm

Mating life	<b>100</b>	Cycles mini
Weight	<b>3,5200</b>	g

**OTHERS CHARACTERISTICS**

\* Depends on the cable used  
\*\* VSWR : 1.20 maxi at 4GHz

**ENVIRONMENTAL**

Operating temperature	<b>-40/+110*</b>	$^{\circ}$ C
Hermetic seal	<b>NA</b>	Atm.cm3/s
Panel leakage	<b>NA</b>	

Issue : **0636 B**

In the effort to improve our products, we reserve the right to make changes judged to be necessary.



**HOUSING + STRAIGHT FEMALE PLUG**

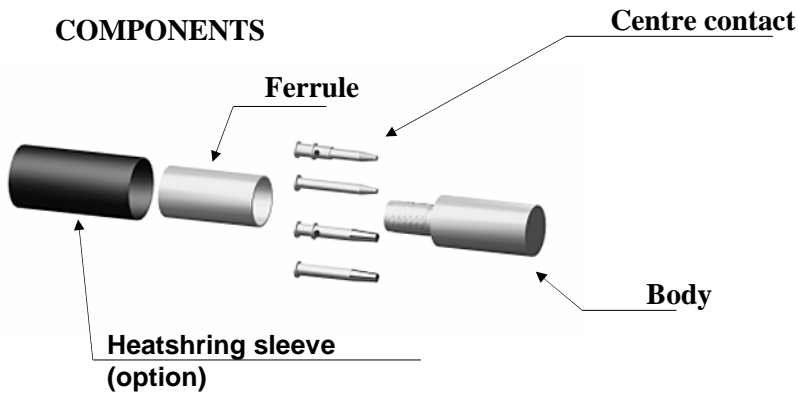
**CRIMP TYPE 5/50S CABLE PACK500**

**R197.114.E01**

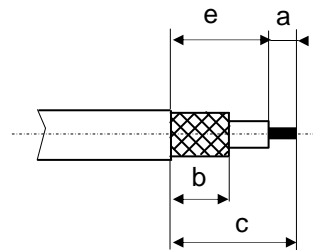
Series : **SMB**  
**CARLOCK**

**Recommended mounting procedure for RG58 cable**

**COMPONENTS**



**STRIPPING DIMENSIONS**



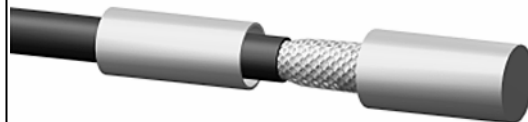
**1**

Slide the heatshrink sleeve onto the cable (Option).  
Slide the ferrule onto the cable.  
Strip the cable.



**4**

Slide the cable into the body until it bottoms against insulator.



**2**

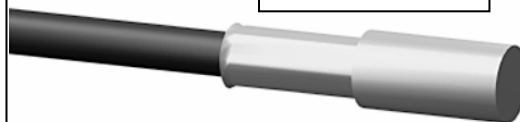
Slide the centre contact on until it bottoms against the cable dielectric.  
Crimp the centre contact with crimping tool R282.235.910 (square 1.1) or with crimping tool R282.281.000 (7 position 2x4pts) + positioner R282.967.034.



**5**

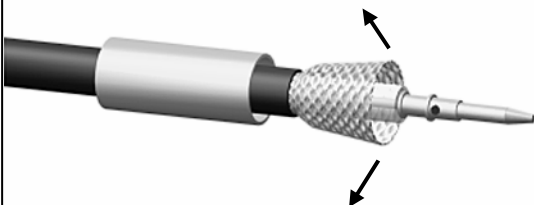
Slide the ferrule over the braid.  
Crimp the ferrule with crimping tool R282.235.011 (Hex 5.41).

After crimping



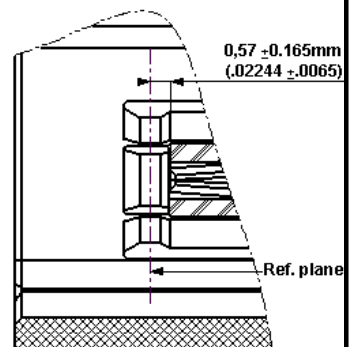
**3**

Fan the braid.



**6**

Check the position of the centre contact between the top of the center contact and the SMB ref. plane : **0.57 ±0.165**.



Issue : 0636 B

In the effort to improve our products, we reserve the right to make changes judged to be necessary.



**RADIALL**®